

Date:	4 June 2016	Time:	18:00
Subject:	<b>Communication 3</b>	Document:	<b>3.3 (page 1)</b>
From:	The Clerk of the course		
To:	All competitors - Crew members		
Number of pages:	2	Attachments:	===

## **Appendix J - Article 253-13: New for 2016 (was optional until end of 2015)**

### **GENERAL CIRCUIT BREAKER**

The general circuit breaker must cut all electrical circuits, battery, alternator or dynamo, lights, hooters, ignition, electrical controls, etc.) and must also stop the engine.

For Diesel engines having no electronically controlled injectors, the circuit breaker must be coupled with a device cutting off the intake into the engine.

It must be a spark-proof model, and must be accessible from inside and outside the car.

As for the outside, the triggering system of the circuit breaker must compulsorily be situated at the lower part of the windscreen mountings for closed cars. It must be marked by a red spark in a white-edged blue triangle with a base of at least 12 cm.

This outside triggering system only concerns closed cars.

Application:

Compulsory fitting for all cars taking part in speed races on circuits, in rallies or hill-climbs.

The fitting is recommended for other competitions.

### **Extinguisher mounted system for WRC cars:**

Article 253-7.1 from Appendix J states: "In rallies":

Articles 7.2 and 7.3 apply.

Extinguishing systems and Manual extinguishers in compliance with FIA Standard 8865-2015 (Technical List n°52) are recommended.

### **Extinguishing systems in compliance with FIA Standard 8865-2015 (Technical List n°52) are compulsory for cars of the RC1 class of the FIA World Rally Championship."**

Technical list n°52 is available on the following link:

[http://www.fia.com/sites/default/files/l52\\_approved\\_plumbed-in\\_extinguisher\\_system\\_8865\\_5.pdf](http://www.fia.com/sites/default/files/l52_approved_plumbed-in_extinguisher_system_8865_5.pdf)

### **Anti-torpedo device for Extinguisher mounted system and manual extinguishers:**

Article 253-7.2.2 (Extinguisher mounted systems) from Appendix J states:

"It must be secured by a minimum of 2 screw-locked metallic straps and the securing system must be able to withstand a deceleration of 25 g. Anti-torpedo tabs are required."

Article 253-7.3.6 (Manual extinguishers) from Appendix J states:

"Anti-torpedo tabs are required."

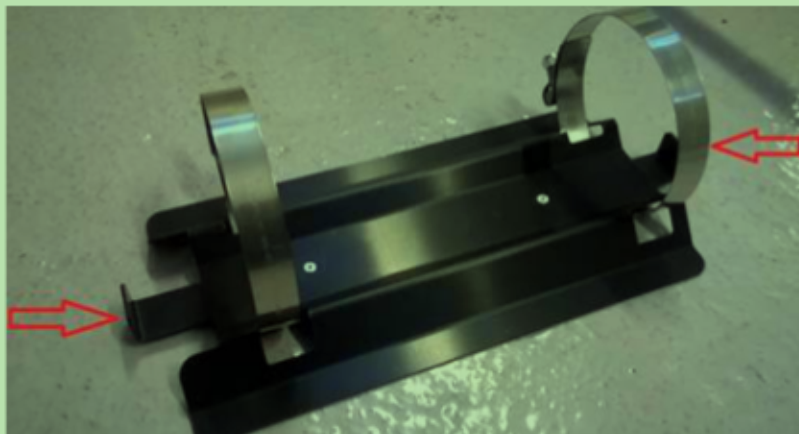
Date: 4 June 2016

Time: 18:00

Subject: **Communication 3**

Document: **3.3** (page 2)

See below an example of anti-torpedo device:



**Maintenance on all Extinguisher mounted system:**

**Maintenance on Extinguisher mounted system:** must be done as specified in the specific instruction manual (see Technical list n°16 and n°52)

**Pop-Off valves + Inserts for R5 cars:**

As from 1/01/2016, an additional insert is compulsory to be used with R5 pop-off valves (see technical list n°43).  
[http://www.fia.com/sites/default/files/lt\\_43-boost\\_control\\_system\\_group\\_r-18.12.2015.pdf](http://www.fia.com/sites/default/files/lt_43-boost_control_system_group_r-18.12.2015.pdf)

**Refueling:**

**Refueling devices to be checked at pre-event scrutineering:**

**2016 WRC Sporting Regulations states**

*« 59.3.7 Cars equipped solely with FIA-specified refuel couplings and using fuel as per Art. 59.1.2 must transport the adaptor in the car and show it at pre-rally scrutineering »*

**Refueling / Personnel equipment and clothing:**

The following article is new in the 2016 WRC Sporting Regulations:

**58.2 PROCEDURE**

**58.2.1** Only actions inside a RZ directly involved in the refuelling of the competing vehicle are permitted.

**58.2.2** In all RZs, a 5 kph speed limit will apply.

The Clerk of the course

Lucio DE MORI

